

How to Guide

LED Corn Light Retro-Fit of Mercury Vapor, High Pressure Sodium, Metal Halide Fixture



PRO-WATT SUPPLY

March 2016
Version 1.2

Disclaimer

As safety is our number one concern for our customers, it is the responsibility of the Installer to be familiar with the possible electrocution risks involved with connecting and working with high voltage electrical components. A professional Installer/Electrician should always be contracted whenever possible to complete the necessary LED installation modifications.

This installation Manual is proprietary to Pro-Watt Supply and no ownership rights are hereby transferred. No part of the Manual shall be used, reproduced, translated, converted, adapted, stored in a retrieval system, communicated or transmitted by any means, for any commercial purpose, including without limitation, sale, resale, license, rental or lease, without the prior express written consent of Pro-Watt Supply.

Pro-Watt Supply does not make any representations, warranties or guarantees, express or implied, as to the accuracy or completeness of the Manual. Users must be aware that updates and amendments will be made from time to time to the Manual. It is the user's responsibility to determine whether there have been any such updates or amendments. Neither Pro-Watt Supply nor any of its directors, officers, employees or agents shall be liable in contract, tort or in any other manner whatsoever to any person for any loss, damage, injury, liability, cost or expense of any nature, including without limitation incidental, special, direct or consequential damages arising out of or in connection with the use of this Guide.

How to Guide

LED Retro-Fit for a “Gas Discharge” HID Type Fixture

1. Make sure breaker for the fixture is **shut off**.
2. Cover the breaker with red Electrical tape to prevent others from switching it back on.

Make Sure it's in the **OFF** position

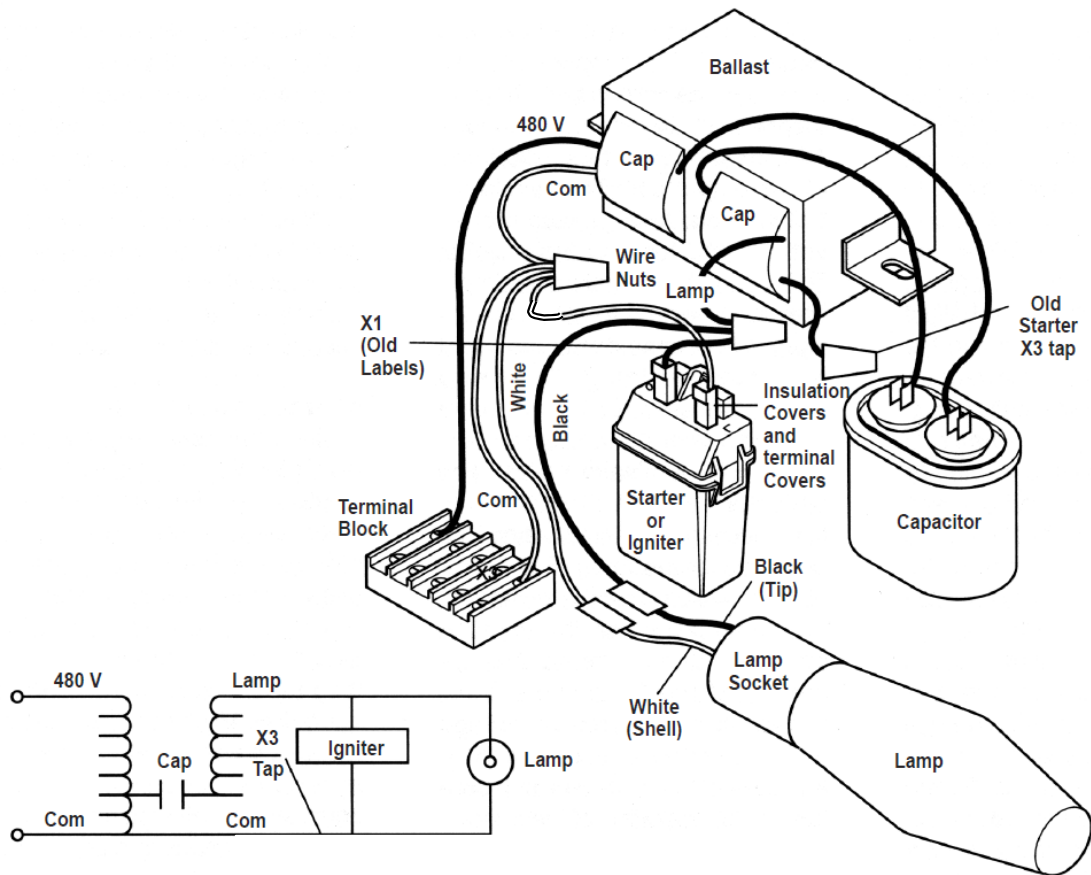


3. Note the components of a typical HID “Gas Discharge” Light Fixture
External



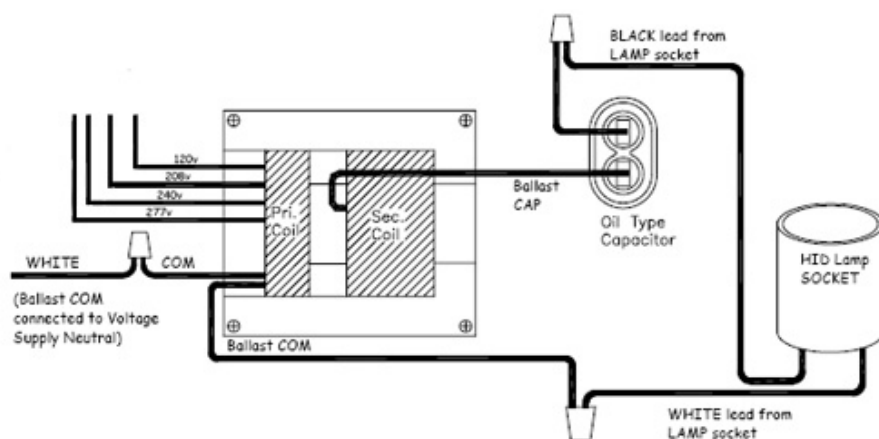
Internal

Simplified Wiring Diagram of a typical "Gas Discharge" Fixture

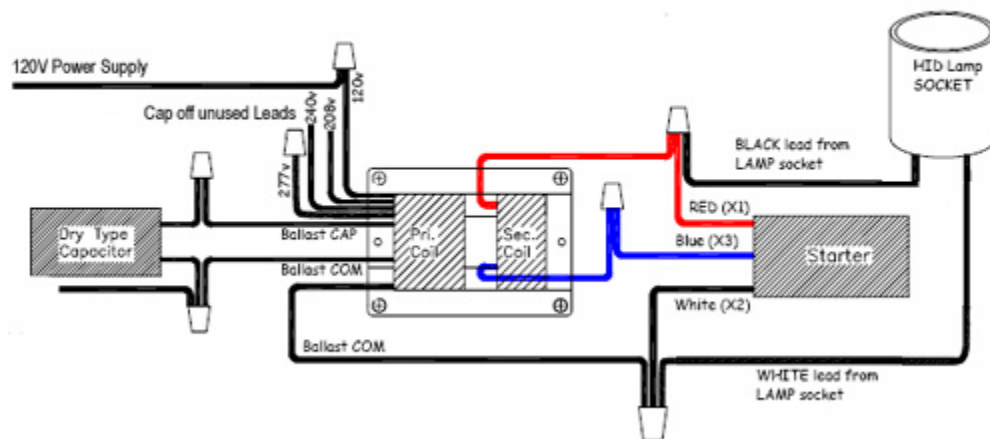


Types of Wiring Configurations

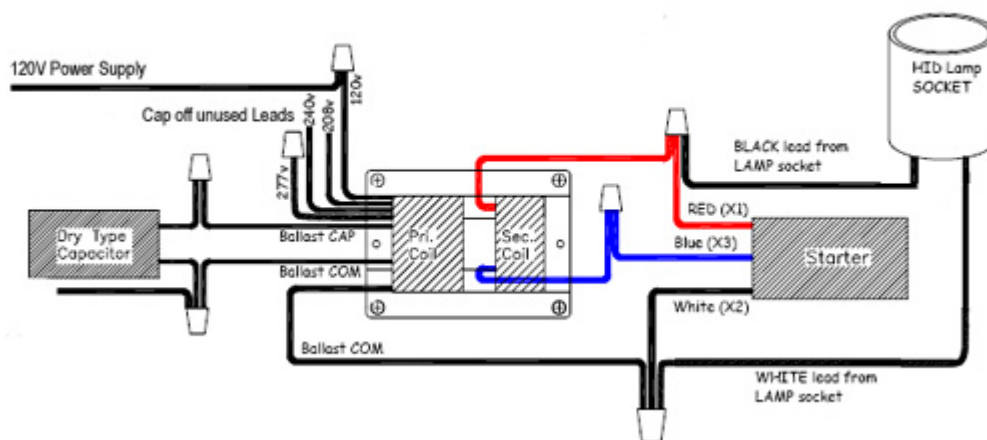
Metal Halide Ballast Wiring Diagram (Probe Start)



Metal Halide Ballast Wiring Diagram (Pulse Start)



High Pressure Sodium Ballast Wiring Diagram

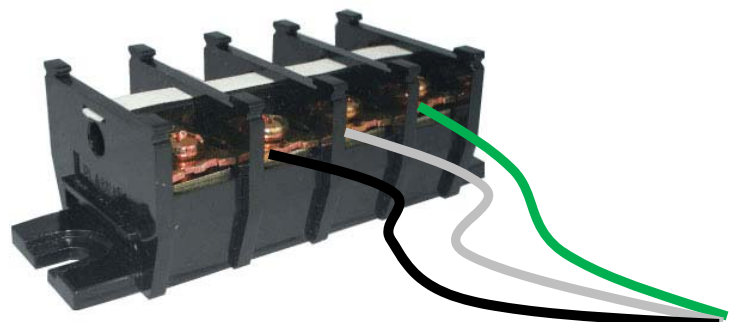
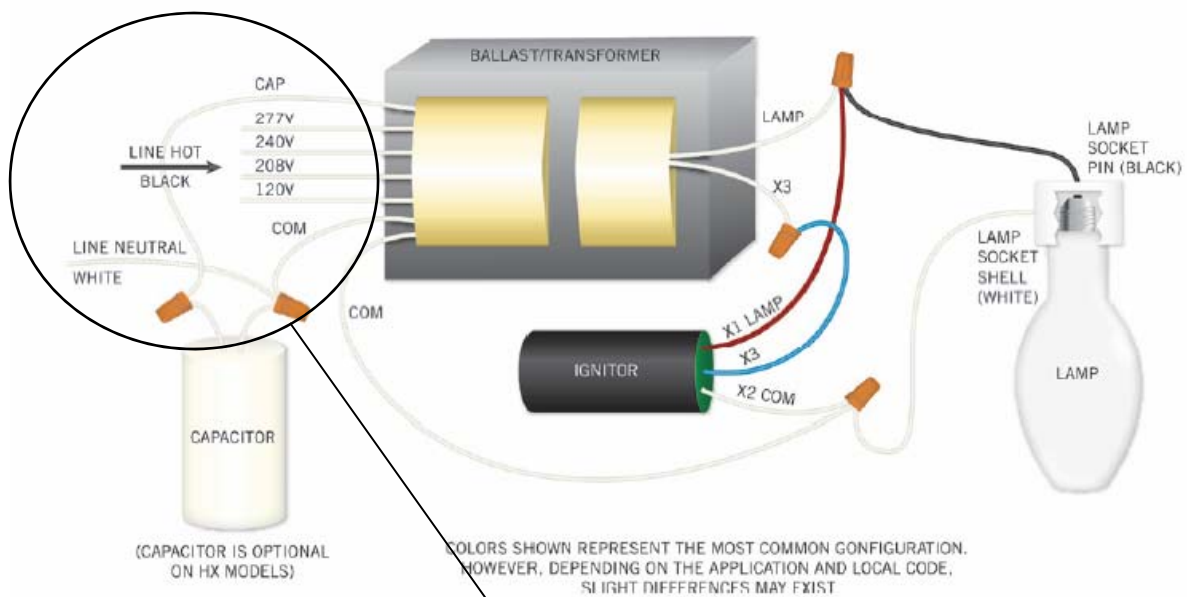


Steps in Retro-Fit Process

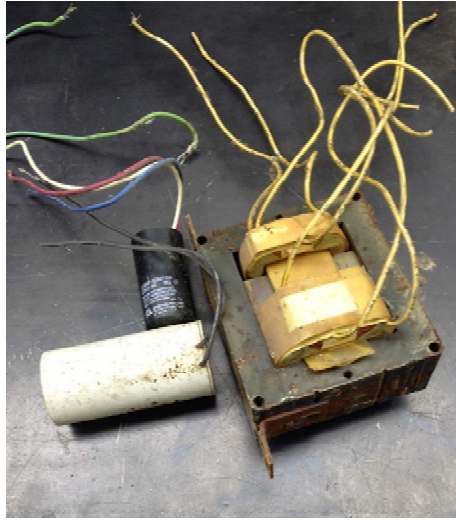
1. Remove the existing bulb from fixture.
2. Open access panel of fixture



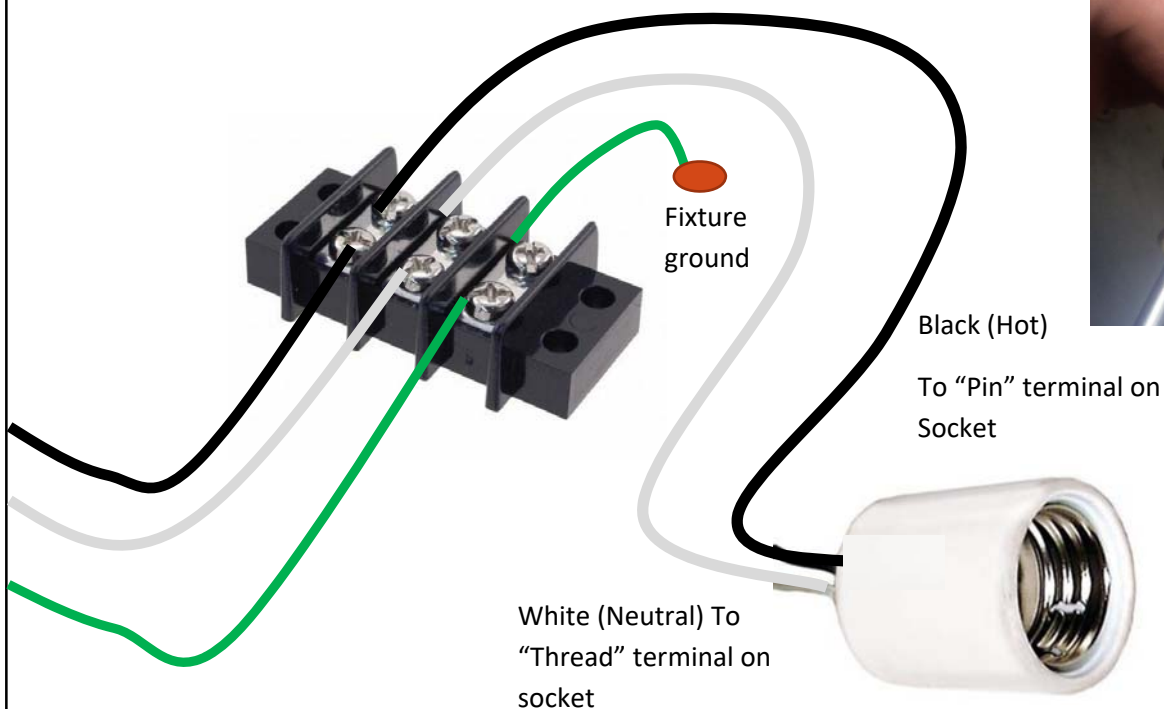
3. Locate and determine AC input Terminal and wires leading into fixture



4. Remove Ballast, Capacitor and Starter from the fixture housing



5. From the AC terminal block, wire the fixture to have a black or red wire (hot) run directly to the “pin” terminal on the Mogul Socket base. Wire a White wire (neutral) to run directly from the Neutral terminal on the block to the “thread” terminal on the Mogul Socket Base. Ensure the Fixture is grounded with the green wire.



6. Replace Cover on fixture housing



7. Install the new Corn Bulb into the fixture



8. Turn on Power

Questions or Comments?

Please call 306-620-9566 or email

Prowattsupply@outlook.com



pro-watt supply
LIGHTING PRODUCTS